

Val d'Isere

Arguably one of the liveliest and best loved of the French ski resorts, Val d'Isere offers reliable late season snow, wide open spaces, infinitely varied terrain, and great nightlife.

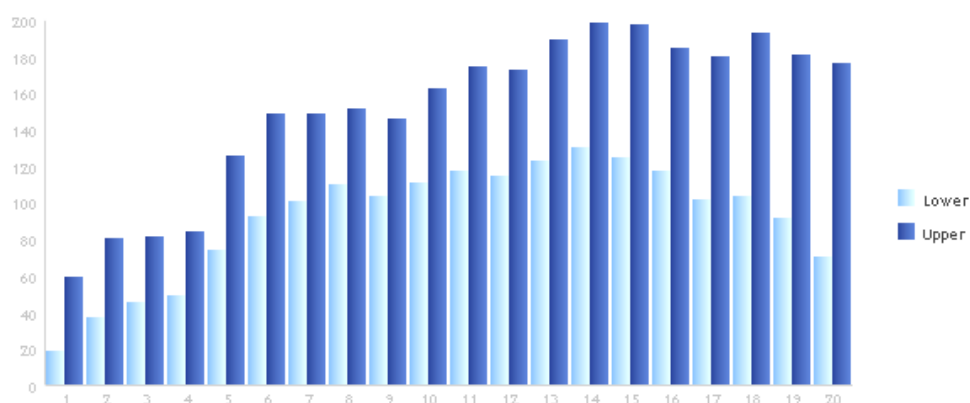
Val d'Isere has plenty of winter sports history with a great pedigree. From a small farming village Val d'Isere has evolved into an exciting, modern ski resort, without losing any of its charm and atmosphere. Both on and off the slopes Val d'Isere really does provide something for everyone. In the village is a brand new sports centre (2 minute stroll from our hotel) with two swimming pools, including a great fun pool with slides and chutes. An ice rink is also only a couple of minutes from the hotel. Once a week the centre of the village comes alive with evening street entertainment, ice sculptures, music and fireworks.

The Slopes

High up above the village are the nursery slopes, with a collection of green and blue runs, ensuring great snow conditions on these pistes. A children's toboggan run is also set to one side. More confident skiers and boarders have the whole of the vast Espace Killy area to play in, with its modern and efficient lift system. From the infamous bumps on Solaise, or the wide open pistes of the glacier at Fornet, to vast areas of challenging off piste (the best lift served off-piste in the world), the Val d'Isere/Tignes ski area can enthral all skiers and boarders of any standard. Those who fancy emulating their downhill race heroes can ski the famous World Cup run — akin to having a game of tennis on Wimbledon's Centre Court.

Apart from adjectives like vast, varied, exciting and incredible, the Espace Killy ski area is best known for being the most snow sure resort in Europe, with guaranteed late season snow. Indeed Tignes is open most of the year, including the summer months! The village's altitude at over 1,850m, and runs up to 3,300m, combined with 2 glaciers, and excellent snow making provision on the lower slopes, ensure great snow conditions late into May. The adjacent statistics show the average snow depth on the upper and lower slopes. The Club holiday will be during week 20.

Val d'Isere
seasonal weekly averages



Week	Nov 1	December				January				February				March			April			
	1	2	3	4	5	6	7	8	9	10	11	12	13	14	15	16	17	18	19	20
Upper (cm)	59	80	81	84	125	148	148	151	146	162	174	172	189	198	197	184	180	193	181	176
Lower (cm)	18	37	45	49	74	92	100	110	103	111	117	114	123	130	124	117	101	103	91	70